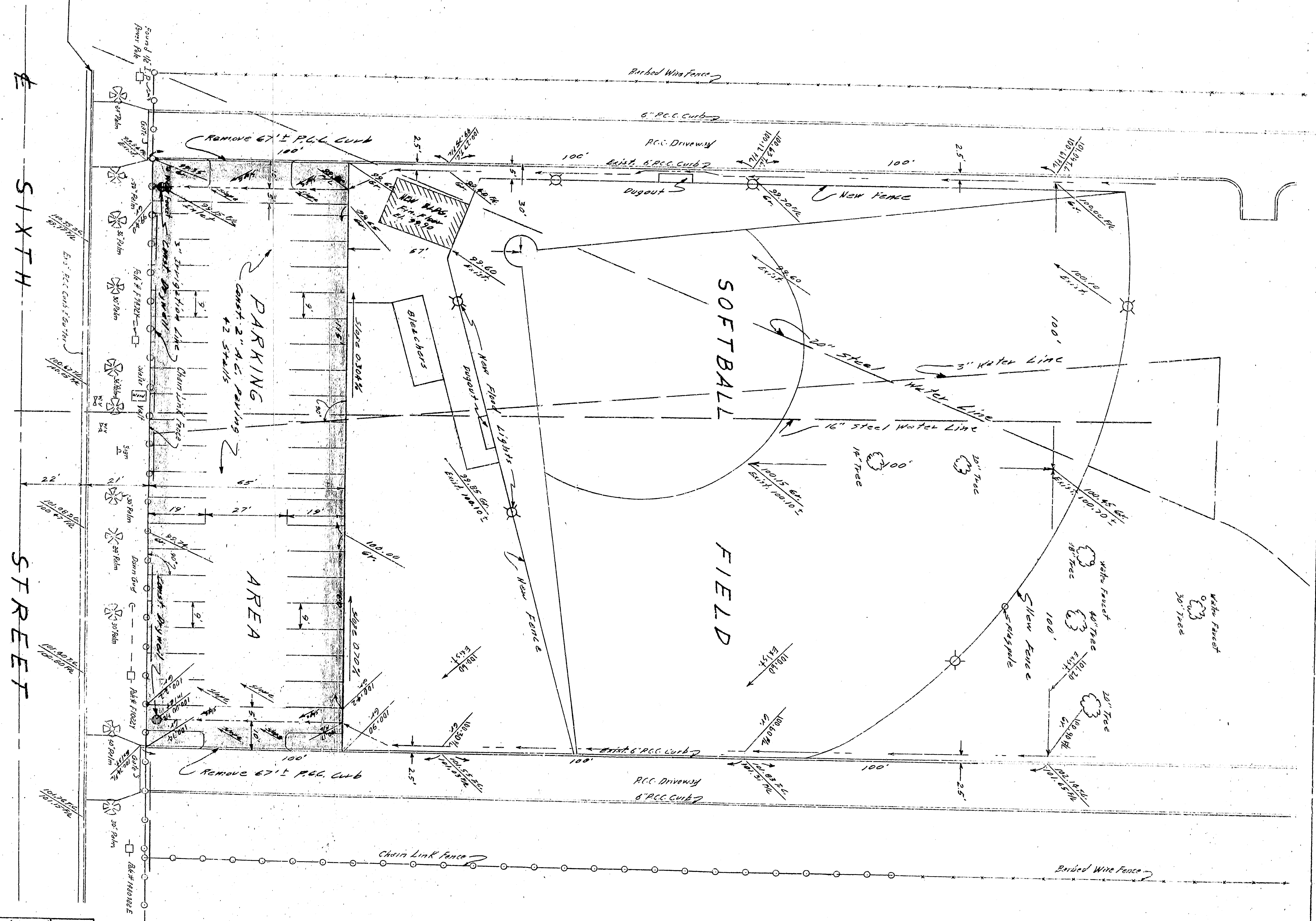


Bound Mark = 500' East of Cont.  
 W. L. Water Dept. Property  
 E. 100' 100.00



APPROVED	8-27-1987	DEPARTMENT OF ENGINEERING
DESIGNED BY	City Engineer	CITY OF SAN BERNARDINO
DRAWING NO.	3589	SOFTBALL FIELD - PLOT PLAN
CHECKED BY	City Engineer	SIXTH ST - BET. WATERMAN AVE.; TIPPECANOE AVE.
SHEET 1 OF 1		CITY WATER DEPT. PROPERTY

**GENERAL NOTES**

1. All work embodied on these plans shall be done in conformity with applicable provisions of Standard Specifications adopted by the City Engineer in the Office of the City Engineer.

